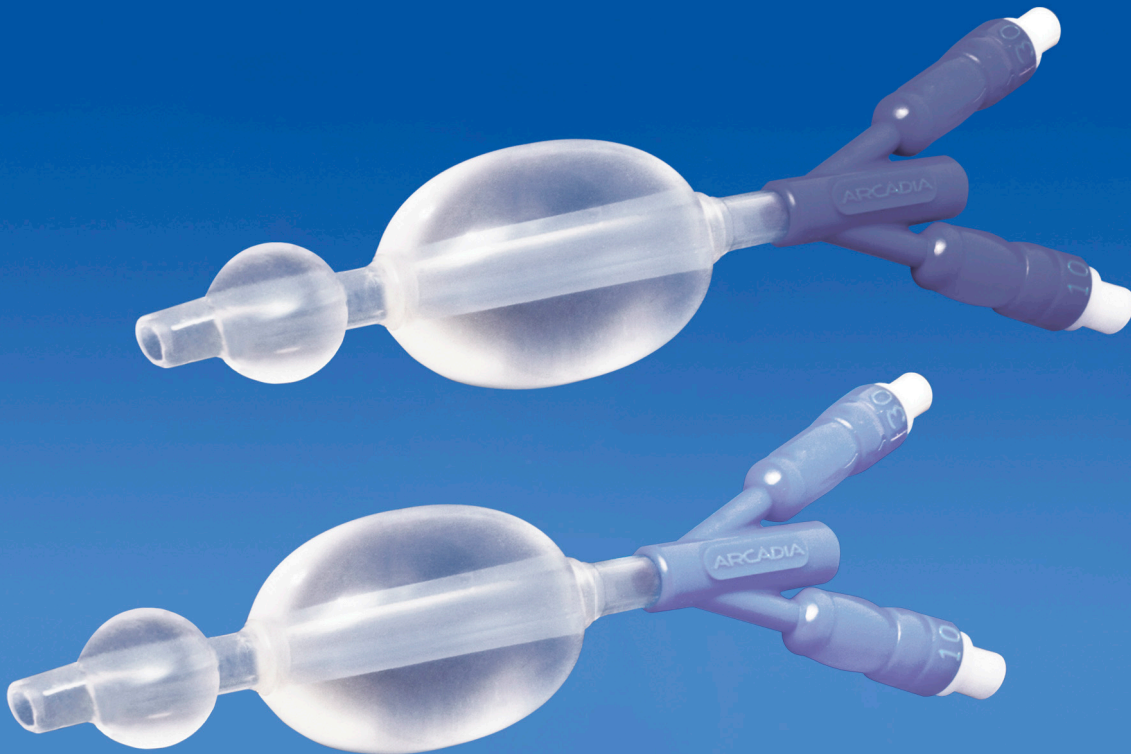


# ARCADIA MEDICAL®

## *Silicone Epistaxis Catheters*



*Latex Free*

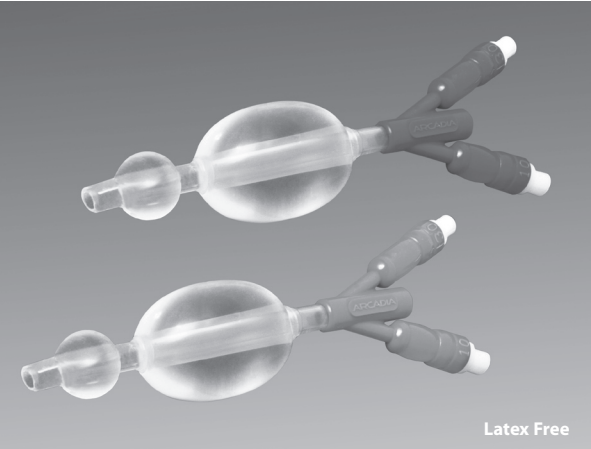
*Exceptional Comfort In Airway Management*

ARCADIA MEDICAL®

CE  
0297

# ARCADIA MEDICAL®

## Silicone Epistaxis Catheters 290 Series



Arcadia Medical® Silicone Epistaxis Catheters are designed with a silicone tube and two independently inflatable soft silicone cuffs, a 10cc posterior Nasopharyngeal cuff and a 30cc anterior Intranasal cuff, that provide gentle, even compression for rapid intranasal hemostasis. The soft compliant silicone cuffs readily conform to variations in the nasal anatomy providing exceptional patient comfort.

The tube lumen allows the patient some continued nasal airflow for breathing and provides a suction channel for a lubricated suction catheter to remove blood clots or secretions.

The two soft silicone cuffs can be inflated with sterile water or sterile saline and fit flat against the tube shaft when deflated for a streamlined design that facilitates easy insertion and removal. The Epistaxis catheter is gently arched to approximate the anatomy of the nasal canal with a beveled tip to ease insertion.

The all silicone construction helps prevent blood clot adhesion.

A pilot balloon is located in front of each luer inflation valve to provide direct tactile feedback of the cuff pressure inside each cuff.

### Silicone Epistaxis Catheters

Reference Number	Tube Size	Tube I.D. (mm)	Tube O.D. (mm)	Tube Length (mm)	Units Per Box
290 045 Small	21 Fr	4.5	7.0	97	1
290 050 Large	22 Fr	5.0	8.0	120	1

Packaged individually sterile.



Arcadia Medical Corporation®  
1140 Millennium Drive  
Crown Point, IN 46307 USA  
[www.arcadiamedical.com](http://www.arcadiamedical.com)  
[info@arcadiamedical.com](mailto:info@arcadiamedical.com)



RMS-UK, Ltd.  
28 Trinity Road  
Nailsea, Somerset  
BS48 4NU, UK



Made in USA

## ARCADIA MEDICAL®

Arcadia Medical and its products are not in any way affiliated or connected with, nor sponsored by, Smiths Medical, the Bivona™ brand or their products.